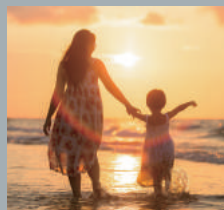


HANSHIN's March Toward Global Leadership!



CONTENTS



HANSHIN VISION

Chairman's Message 6
Vision 8
Chronology 10
Corporate Identity 12



BUILDING WORKS

Housing & Apartment 16
Office Building 22
Cultural Facilities 24



CIVIL WORKS

Railroad, Subway, Bridge 28
Highway, Environment Project 30
Reclamation, Airport Runway,
Lot Development 32



ELECTRICITY PLANT

Electricity Plant 36



OVERSEAS

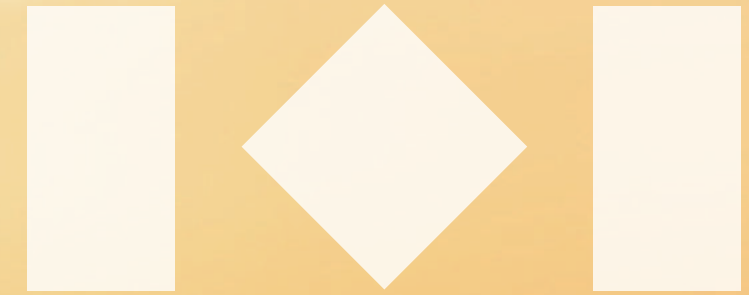
Middle East/China 40
Vietnam 42
ASEAN 44

Think Human & Nature

Hanshin Corporation, Human-centered
philosophy and naturalist culture



Hanshin For Family



Constructing greater happiness and better future
Hanshin is your family

Built on devotion , we will impress the world.

CHAIRMAN'S MESSAGE

We are living in the time of infinite competition with the world. Only those who have advanced technologies and distinguished vision for the future can become the true leaders.

Hanshin began its construction business in 1950 and has accumulated know-how and technology in architecture, civil works, electricity, plant, and waste treatment. Hanshin is one of the leading construction companies in Korea and has gained worldwide reputation from successful performance of many projects in China, Kuwait, Saudi Arabia and Vietnam etc. Hanshin has been devoted to building man-centered and nature-centered construction culture, whereas the global trend has been beauty, convenience, and the latest technology.

Hanshin's unique philosophy, "Devotion to parents and Love of family", is built on gratitude and consideration for parents, everyone in the world who has helped me, and even the nature. Hanshin believes that all technologies must be developed for human and nature. Hanshin Corporation will work for human, technology, and environment and impress the world with its human-centered management and nature-friendly technology.

We would truly appreciate your support and companionship. Thank you.

CHAIRMAN | Choi, Yong - Sun


최용선





VISION

Hanshin's harmony of human,
technology, and environment
becomes the world standard.



Hanshin Corporation is developing its unique capacities through its know-how that has been accumulated since 1950 on the philosophy of "Love of Family", endless R&D for flawless quality, human-centered value investment and management policies for men and nature.

Hanshin Corporation will impress the world with its unique culture and create human-centered spaces of happiness where men can communicate with nature and technology.

CHRONOLOGY

Home Building

1950.03. 05 Hanshin Furnace Engineering established

New Establishment

1967. 02. 24 Hanshin Corporation established

Birth of the Legend in Shinbanpo, Gangnam

1976. 07. 07 Enlisted in Korea Stock Exchange Shinbanpo apt Complex project launched
1976. 10. 28 (About 20,000 units built until the 27th phase)
1978. 04. 17 Began construction works in Kuwait (religious complex building, etc)

New Metropolitan City

1981. 12. 28 Began construction works in Saudi Arabia (Jubail Royal Committee Housing Corporation)
1986. 01. 01 Korea's first housing research center and technology center established
1987. 06. 25 Won Presidential Award (No. 1863, Busan Subway Project)

One of Top 10 Contractor

1990. 08. 01 Won Joongang Ilbo Advertising Award
1993. 07. 01 Recorded 10th highest in total contractual amount Presented
1995. 02. 24 new CI in celebration of 45th anniversary Acquired ISO
1996. 08. 23 9001(International Quality Assurance System) Won
1999. 06. 04 Presidential Award and Honor (No. 3642, Metropolitan Water System)

World - class Company

2000. 08. 01 Certified World-class Builder (Haengdang-dong Reconstruction Site), Certified Green Building Builder
2002. 11. 25 CEO Choi, Yong - Sun
2003. 12. 02 Acquired ISO 9001 / 14001 Integrated Management System Certification
2004. 03. 15 Established Vietnam Office
2004. 11. 26 The 2004 Munhwa Advertising Grand Prix Construction Award (Munhwa Ilbo)

1950

1960

1970

1980

1990

2000

2004. 11. 30 The 2004 Korea Economy Newspaper Residential Culture Award (Apartments)
2004. 12. 31 The 2004 Leading Brand Award (Seoul Economy Newspaper)
2005. 03. 30 Dongtap Industrial Honor (No. 1763, Chungbuk Line Railroads)
2005. 06. 08 Vietnam New City Design Subscription - Winner of all categories (Hoa Binh New City, Ha Tay New City)
2005. 11. 30 The 2005 Korea Economy Newspaper Residential Culture Award (Best Brand)
2007. 07. 16 Maeil Economy's Livable Apartment Builder Award
2009. 12. 01 Awarded the Medal for Peace and Friendship by Vietnam Government

New Achievement of Hanshin

2010. 02. 24 60th Anniversary
2010. 03. 16 Won 'The Best Contractor Award' by Korea Land & Housing Corporation
2010. 05. 26 Won 'The Design & Engineenig Safety Excellence Awards' of BIDV Tower Project, Vietnam from Building and Construction Authority Singapore
2010. 09. 23 Youth Generation Medal (Central Commitee of the Ho Chi Minh Communist Youth Union)
2011. 10. 07 Won "9th Korea Color Awards", award for excellence (Chung - gye Hanshin "Hyu" plus)
2012. 10. 23 Won "Korea Construction Awards", the Main Prize (Se - Jong Newtown 1- step Apartment)
2013. 09. 12 Acquisition of Green - Tech Certification (Reduction technology for living - water)
2013. 09. 13 Signed MOU for cooperate work for construction on Samar in Philippine
2013. 11. 01 Established a local corporation in Myanmar
2015. 01. 29 2015 Award Certificate presented by People's Committee of Dong Nai Province, Vietnam
2015. 02. 06 2015 Award Certificate presented by Minister of Vietnam Ministry Transport
2017. 08. 08 Maeil Economy's Livable Apartment Builder Award
2018. 07. 28 Recorded 15th highest in total contractual amount
2019. 02. 24 69th Anniversary

2010



Hanshin Corporation has grown with the development of Korea.

Established in 1950, Hanshin Corporation has created true value based on tradition and technology. Hanshin's continuing efforts to improve quality have resulted in countless awards and global reputation.

CORPORATE IDENTITY

1970s Gubanpo

Gangnam Shinbanpo Town Today

Gangnam Shinbanpo Town Night View

The CI represents Hanshin's H. The "H" consists of one pole that represents labor-management relations and the other for producer and consumer. Between the two poles, the Hanshin Square that symbolizes Hanshin's efforts to create richness based on harmony.



Green symbolizes promise and nature and represents Hanshin's promise to customers and eco-friendly philosophy. Green, symbolizing wills and ideals, is Hanshin's strong wills to go into the world.

BUILDING WORKS

New spaces are born wherever Hanshin goes.

From apartments to offices and from public facilities to remodeling, Hanshin is building advanced structures for your satisfaction and pride.

•
Housing, Apartment
Office Building
Cultural Facilities
Remodeling
•

Housing, Apartment

Building Works

- 01 Jeju Global Education City
Hanshin The Hue
- 02 Siheoung Baegot Hanshin The Hue
- 03 Cheonggye Hanshin The Hue

01

02

03



Administrative - City First Village

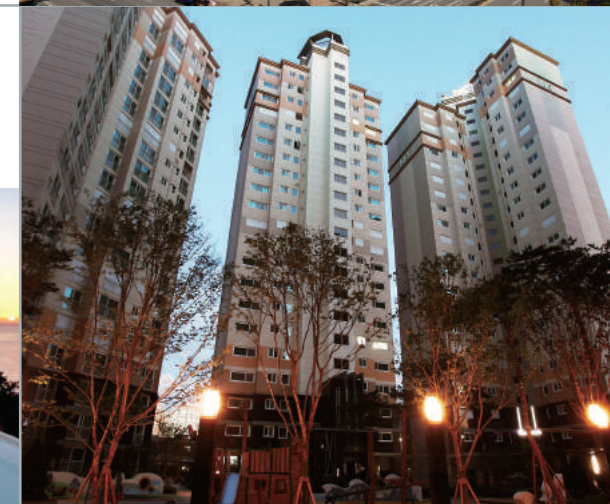
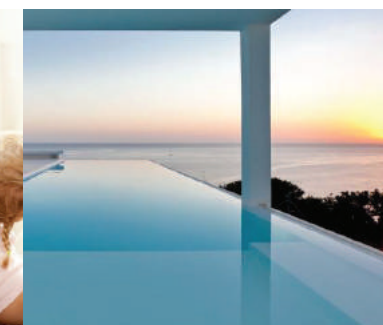
- Sinbanpo Hanshin 1st~27th
- Suwon Hanshin 1st~5th
- Gangil District 2nd/4th
- Bundang First Village
- Bundang New Town 1/2 Section
- Seoul Hanshin Operahouse I, II
- Bundang Town House
- Bakdal 1st~3rd Reconstruction
- Seoul Daechi Haechang Reconstruction
- Guro 7th District Redevelopment
- Chuncheon Yoseon Reconstruction
- Incheon Gajwa/Gwangyo Reconstruction
- Jeonju Inhu/Hyoja Reconstruction
- etc



THE HUE
HANSHIN



PRIDE & JOY



Premium Brand "Hanshin The Hue"

Eco-friendly premium apartment complex for men and nature - Hanshin The Hue

The perfect leading brand

Distinguished space layout, latest systems and styles, wellbeing system

Best quality

Constructed about 300,000 apartment units nationwide



THE HUE

HANSHIN
RESERVE



01	02
03	04
	05

- 01 Gimpo Hanshin The Hue Terrace
- 02 Busan Haewoondae Hanshin The Hue
- 03 Sejong 2-1 P1 Hanshin The Hue
- 04 Daegu Maecheon Hanshin The Hue
- 05 Hwaseong Dongtan Hanshin The Hue

Housing, Apartment

Building Works

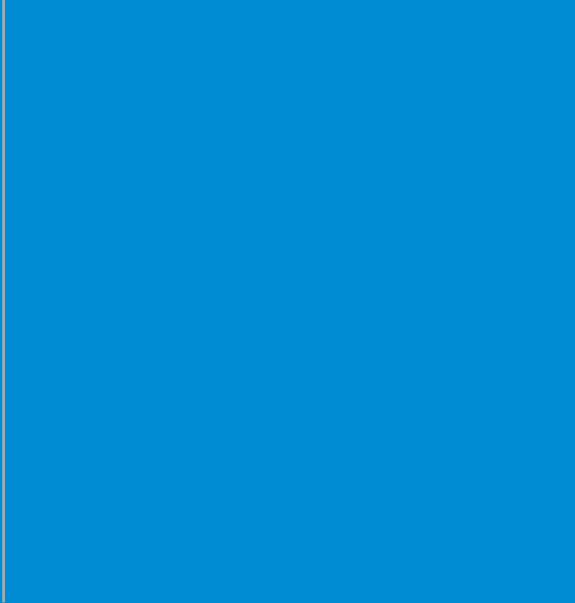


- 01 Sejong-City 2-4 Hanshin The Hue Reserve
- 02 Sejong-City 1-5 Hanshin The Hue Reserve II

01	
	02

- Sejong A-2BL First Town
- Sejong 1-3 L3 Hanshin The Hue
- Sejong LH2 Section
- Sejong LH4 Section
- Sejong M8 Hanshin The Hue River-park
- Sejong M2 Hanshin The Hue Elite-park
- Sejong 2-1 P1 Hanshin The Hue
- Sejong 2-4 Hanshin The Hue Reserve
- Sejong 1-5 Hanshin The Hue Reserve II
- Sejong 4-2 Hanshin The Hue
- Gimpo Hanshin The Hue Terrace
- Busan Haewoondae Hanshin The Hue
- Daegu Maecheon Hanshin The Hue
- Hwaseong Dongtan Hanshin The Hue
- etc





01	02	03
04		

- Siheung Baegot Hanshin The Hue
- Siheung Mokgam Hanshin The Hue
- Wonju Dangu Hanshin The hue
- Bucheon Okgil Hanshin The Hue Jade County
- Cheongju Hanshin The Hue Central-park
- Gangneung Songjeong Hanshin The Hue
- Gangneung Hoesan Hanshin The Hue
- Incheon Yeongjong Sky City Hanshin The Hue
- Incheon Cheongra Hanshin The Hue
- Miryang Nano City Hanshin The Hue
- Yongsan Mulgeum Hanshin The Hue
- Goseong Cheonjin-ri Hanshin The Hue
- Busan Goejeong Hanshin The Hue
- Busan Ilgwang Hanshin The Hue
- Incheon Geomdan Hanshin The Hue
- Suncheon Bokseong Hanshin The Hue
- etc



Housing, Apartment

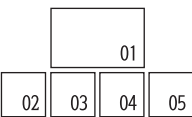
Building Works

Office Building

Building Works

Korea Fire Insurance
 Government Employees Pension Services
 Hanshin IT Tower 1-2
 Federation of Korean Trade Unions
 Korea Teachers Credit Union
 Chungcheong Bank
 KR Headquarter
 Korea Institute of Public Finance
 Daehan Jedang
 Munjeong Regal Complex
 Incheon Airport 2nd Government Complex
 etc

01 Incheon Airport 2nd Government Complex
 02 KR Headquarter
 03 Cheongna International City
 Hanshin The Hue Canal Way
 04 Korea Institute of Public Finance
 05 Seoul Eastern District Prosecutor's Office



Korea Teachers Credit Union Tower



Various modern space

Various modern business spaces, such as office buildings, officetels (studio apartments), and apartment factories

For your business needs

Advanced office environments to maximize your efficiency and pride

Optimal business buildings

Custom-designed space and intelligent systems



Spaces for the value of life

Various facilities for life and culture, including shopping centers, sports centers, hospitals, schools, and hotels

Man-centered design

Functional designs and finishes that meet the characteristics and uses of each building

Distinguished new techniques

New techniques for perfect insulation, soundproofing, and durability

01	02	03
	04	

- 01 Daehyundong Shopping Mall
- 02 Mia Trejio
- 03 DaeJeon S-Meca
- 04 Daegu Seven Valley

Daegu Seven Valley

Jeonju Tourism Hotel

Banpo New Core Department Store

Seoul Education Culture Center

Mia Trejio

Daejeon S-Meca

Hanshin Sports Center

etc



Seoul Education Culture Center

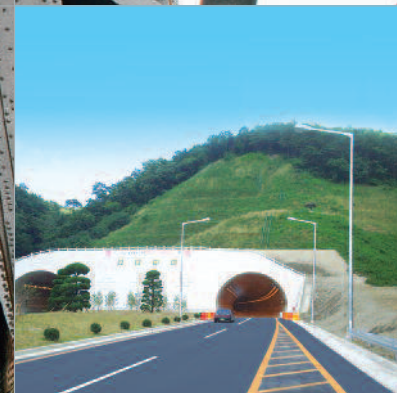
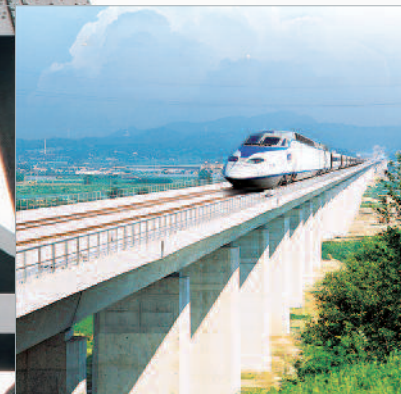
Cultural Facilities

Building Works

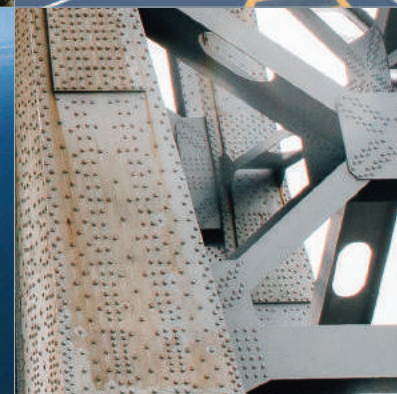
CIVIL WORKS

New technology and new techniques

We use advanced technology, such as modern civil engineering and automated measuring system, and develop newer technologies to contribute to Korea's infrastructures.



Railroad, Subway, Bridge
Highway, Environment Project
Reclamation, Airport Runway,
Lot Development





Seoul-Busan High-speed Railway



Pride of Korea's construction history

Builder of Gyeongbu High-speed Railway, Korea's artery, and major subway lines in Seoul and Busan

Connecting Korea

Builder of railroads and bridges nationwide for Korea's industrial development

Extensive experiences

Know-how and technology to overcome any terrains and bedrock conditions

Seoul Subway Line No. 7 Zone 7-6/7-1

Ansan Electric Car Base and Entrance Rail

Wangshipri ~ Budang Double-track Zone 13

Gyeongbu High-speed Railway Zone 5-2/9-1

Seoul Subway Line No. 3 Zone 312

Daegu Subway Line No. 2 Zone 13

Busan Subway Line Civil Works

Dong-gang Bridge

Yangsu Bridge Reconstruction

Taeon Marine Footbridge

Seoul Eungbong Bridge Expansion

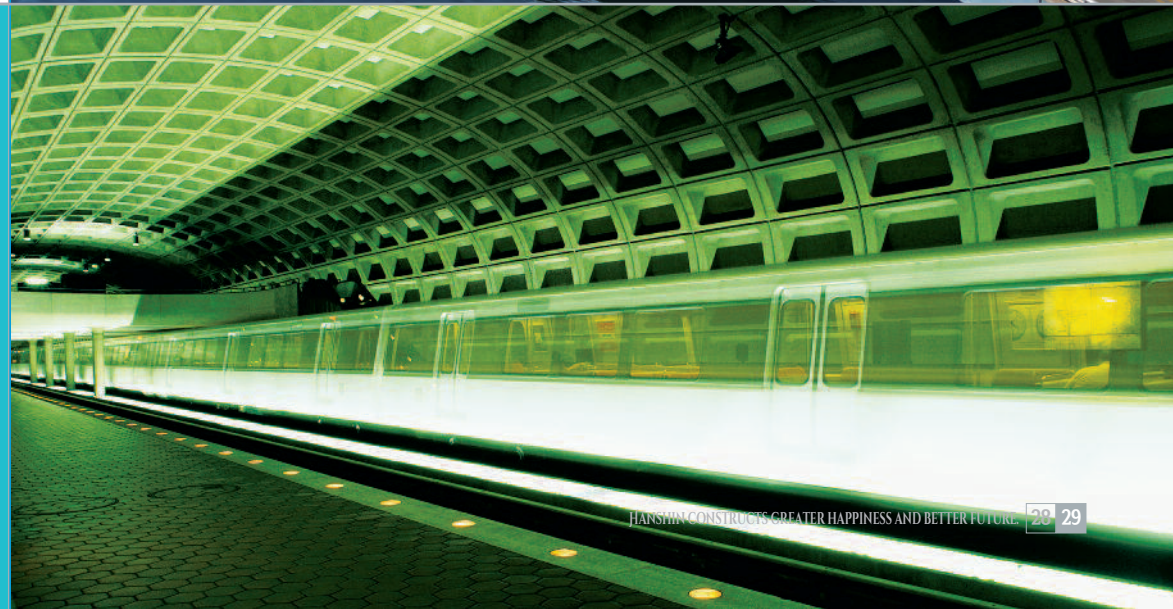
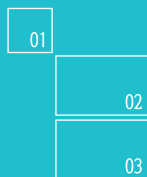
etc



Railroad, Subway, Bridge

Civil Works

- 01 Taeon Marine Footbridge
- 02 Yangsu Bridge Reconstruction
- 03 Subway Line No.7





Seoul-Busan Highway

Road construction projects nationwide
 Gyeongbu Highway, Gyeongbuk Highway, Yeongdong Highway, Seohaean Highway, etc

Contributed to balanced development of Korea
 Contributed fluent traffic and easy transportation for national economy and local development

Eco-friendly projects for men and nature
 Eco-friendly water / sewerage systems and water treatment plants



- 01 Water Treatment Plant
- 02 Guryong Tunnel
- 03 Jaguem - Hoecheon Bypass
- 04 Yeongdong Highway

01	02	03
		04

Highway, Environment Project

Civil Works

- Jungbu Highway
- Gyeongin Highway 6-lane Expansion
- Gyeongbu Highway Yangjae~Suwon
- Suwon~Cheongwon
- Namhae Highway Naeseo~Naengjeong 8-lane Expansion
- Seohaean Highway Incheon~Ansan
- Dangjin~Seocheon
- Yeongdong Highway Wonju~Gangneung 4-lane Expansion
- etc



Reclamation, Airport Runway, Lot Development

Civil Works



- 01 Incheon International Airport Runway
- 02 Incheon International Airport Terminal 2
- 03 Incheon International Airport
- 04 Sejong First Town Lot Development
- 05 Hwaong Land Reclamation Project



Contributed to expanding national territories
Successful completion of reclamation, lot development, and port construction projects

Completed difficult projects worldwide
Completed difficult projects, including reclamation in Hwaong, without any accident and disaster

Ports
Contributed to building advanced ports for Korea's competition in the world

- 01 Incheon International Airport Site Development
- 02 Hwaong District 7



- Incheon International Airport Site Development
- Hwaong Embankment
- Hwaong Land Reclamation Project
- Saemangeum Land Reclamation project
- Sejong First Town Lot Development
- Yangsan Mulgeum Lot Development
- Gwangmyeong Lot Development
- Busan Ilgwang Lot Development
- etc





ELECTRICITY PLANT

What Hanshin does becomes
the new history of construction.

From T/L to industrial plants, Hanshin has applied advanced electrical technologies and built massive industrial plants that have reset records in Korea's history of construction.



Electricity · Plant



New technology and new techniques

Completed successfully Korea's first 765kV T/L with Hanshin's original technology.

Various electrical works

Installed optimal communication systems for buildings, electrical railroads, and communication networks for express rails.

Various plants

Proved technology in building plants, including refineries.

- 01 345kv Sinpocheon ~ Sindukeun T/L
- 02 765kv Sinseosan T/L
- 03 Jecheol Chem,Cheongrim Plant
- 04 Incheon Asiad Main Stadium
Electric System installation

01	02	03
		04



Onsan Refinery

Gyeongnam Textile Mass Production Plant

Haitai Confectionery Cheonan Factory

Chungbuk Line Electrical Works

765KV Sinseosan T/ L

etc

Electricity Plant

Electricity · Plant





OVERSEAS

We are building reputation in the world.

We are participating in various projects overseas, including residential houses, office buildings, mixed-use complexes, sports centers, highways, etc., and building our reputation as a global builder.



Overseas

Middle East/China



Sultan Building
Yanjil Hanshin Apartments
Murghab Office Building
Salwa & Fahaheel Girl's Elementary School Mongolia
Millenium highway
Kuwait Religious Complex
Jubail Royal Committee Housing Corporation Hanoi
HH4 Mixed-use Complex (Design/Supervision) etc



Globally recognized capacities

Since we began our overseas works in 1978, we have built office buildings, highways, and houses around the world.

Hanshin - A Global Builder

Hanshin has worked in China, Saudi Arabia, Kuwait, Vietnam, etc.

Hanshin's global reputation

Participated in various large construction projects abroad to transform from 'Korea's Hanshin' into 'Global Hanshin.'

01 Jeddah-Riyadh-Damman expressway
02 Sultan Building
03 Behbehani Commercial Center Building
04 Jubal Royal Committee Housing
05 Public Housing Project, Riyadh





Overseas

Asean

- | | | |
|----|----|--|
| 01 | 02 | 01 Trung Hoa Interchahge Project |
| | | 02 Design of Hanoi HH4 Commercial and Housing Building |
| | 03 | 03 BIDV Tower Project |
| 04 | | 04 Hanoi Thanh Xuan Underpass Project |



- | | | | |
|----|---|----|---|
| 01 | 01 Noi Bai International Airport to Nhat Tan Bridge Connecting Road Project | | |
| 02 | 03 | 04 | 02 Binh Duong Water Supply System |
| | | | 03 Vam Cong Bridge Construction Project |
| | | | 04 Thinh Long Bridge Project |
| | | 05 | 05 CJ-SC Global Milling Plant Project |



As a partner for economic growth of Vietnam

Hanshin has established itself as a partner for economic growth of Vietnam by successfully implementing the country's major projects such as BIDV Tower Project, the landmark in downtown Hanoi, various roads and bridges in Vietnam, and CJ-SC Global Milling Plant Project.





- | | | |
|----|----|---|
| 01 | 02 | 01 Improvement of National Road No.21 Phase 2 in Cambodia |
| | 03 | 02 Improvement of National Road No.21 in Cambodia |
| | 04 | 03 Mekong River Integrated Management Project in Lao PDR |
| | | 04 Rural Road Improvement Project II in Cambodia |



Representative Office in Vietnam

Tel
+84-90-220-7088



Branch Office in Cambodia

Tel
+855-78-233-399



Site Office in Lao PDR

Tel
+856-20-9950-1777

Dream of widespread growing with the world through construction based on sincerity.

We create values and make the world grow like we grow a forest.
Hanshin Engineering & Construction will complete the legend of the Korean economic miracle as a global economic miracle.



As Hanshin has accomplished the development of the national land of South Korea, the company's advanced technology, impeccable quality, and excellent experience has come into the spotlight abroad. Hanshin brought worldwide reputation to its unparalleled construction technology.

Since Hanshin began its overseas business in the late 1970s when it advanced into the Middle East, it has been expanding its operations in Southeast Asia. Hanshin has established itself as a partner for economic growth of ASEAN by successfully implementing the country's major projects such as buildings, roads and bridges, water supply/treatment plants in Vietnam, Cambodia, Lao PDR, Sri Lanka.

Also launching its operations in Myanmar and Bangladesh, Hanshin is re-enacting the legend of the Korean miracle throughout the world as a successful partner for all countries around the globe.

Hanshin Corporation is dedicated to building
most comfortable living spaces for men and nature that touch
the hearts of people who live within.

PRIDE & JOY

This is a pledge by Hanshin E&C to present a high-dignity of living and joyful places to customers. Hanshin E&C, based on the pride of the leading construction company of Korea, presents a comfortable relax and prestige living place.

Simultaneously, Hanshin E&C is developing itself which its employees and staffs could achieve pride and joy through thorough ethical management and organizational innovation.

